

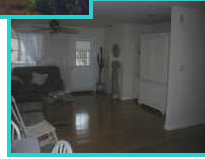


**Bayside Beauty**  
\$559,000-\$648,876

MLS #110536  
332 East Sawyer



Beautifully kept personal home with excellent bay views from every room. With immaculate hardwood floors throughout, this home was completed in 2000 and has never been rented out.

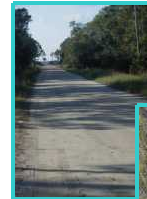


**Great Offerings in Our Neighborhood...**  
Bayside Living at Its Very Best!

The large master suite and open floor plan make this the ultimate home away from home, a great getaway place for relaxing by the bay with friends and family. And it has great curb appeal!



Lovely native vegetation including large pines, grasses, and palmetto on this high, dry property make this vacant lot an excellent choice for building. The bay is just a short walk down the shaded sand road, and the gorgeous white sand beaches of the gulf are only minutes away as well. A great addition to your investment portfolio.



**208 Brown Street**  
\$360,000  
MLS #107734

**Great Offerings on the Gulf Front...**

Take Me to the Water!



It's not often that an East End property on St. George Island comes

**Angel's Paradise**  
\$1,695,000-\$1,944,876

MLS #110535  
1624 East Gulf Beach  
St. George Island



onto the market priced like this one – and with ongoing rental income!

The home features colorful tile work and a vaulted ceiling in the great room, with gorgeous views from all rooms and the spacious decks. 120' of beach front!



**Lots 6&6a in Unit 2**  
\$525,000  
MLS #110731  
394 East Gulf Shore Drive  
Dog Island



**Susan I. Bassett**  
Prudential Resort Realty  
927-2666 x113  
323-0092  
sbassett@stgeorgeisland.com

Money Magazine's "The Last Affordable Beach House" calls it "the area's undiscovered gem," and so it is. Accessible only by boat or small plane, the gorgeous wide open beaches of Dog Island are awe-inspiring. For boating, shelling, and just getting away from the crowds, Dog Island is the ticket. This beach front parcel is a rare offering!



More great listings at [www.stgeorgewired.com/](http://www.stgeorgewired.com/)

